



The Standards Based Integration Company



Authorized Value Added Reseller for Europe

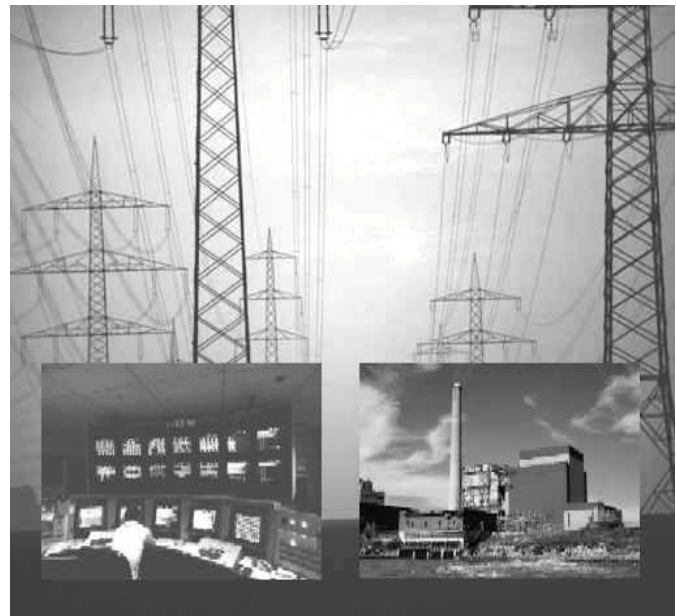
ICCP-TASE.2 Interface for the Utility Integration Bus

Description

SISCO's Utility Integration Bus (UIB) ICCP-TASE.2 Interface provides integration with remote systems supporting ICCP (IEC60870-6 TASE.2) with control center and enterprise applications using the UIB. The UIB ICCP interface leverages important industry standards such as EPRI's Common Information Model (CIM) and the OMG Data Access for Industrial Systems (DAIS) and Data Access Facility (DAF) standards to provide a unique and powerful solution for ICCP-TASE.2 integration:

- The UIB ICCP Interface provides access to the ICCP data by publishing ICCP data as CIM measurements.
- DAF based client applications (e.g. the DAF browser provided with the UIB) can manage the configuration of the UIB ICCP Interface by adding and deleting CIM measurements.
- DAIS clients can access ICCP data as CIM measurements via a standardized publish/subscribe interface without having to have knowledge of the ICCP point names or configuration.

The result is a powerful standards-based ICCP-TASE.2 integration tool that goes beyond simple ICCP-TASE.2 front-ends or gateways to simplify integration of control center and enterprise applications by eliminating the burden of handling special ICCP configuration and data transformations.



Benefits

- Extensive support for important industry standards increases flexibility and independence for your control center and Enterprise Application Integration (EAI) projects.
- Viewing data as CIM measurements enables implementation of a common information exchange model that is power system oriented making applications easier to develop and manage.
- Leverages existing EAI and middleware products such as SeeBeyond™ and IBM MQ Series™ to provide maximum performance and flexibility for integration with other enterprise applications.

About SISCO

SISCO, Inc. is a private company founded in 1983. We have offices in Michigan, New Jersey and Alabama with engineering staff in other locations as well.

Over the years SISCO has established itself as a leader in several technologies. Today our capabilities are used in a wide variety of industries from automotive manufacturing to electrical and gas power transmission, distribution and generation systems. We work with both end users and OEMs serving those end users. SISCO's ability to partner with other OEMs and integrators allows us to deliver more capabilities at a lower cost resulting in better solutions for you. Today SISCO has demonstrated leadership and capabilities to provide solutions in the following areas:



- ❑ Message bus based integration technology based upon advanced publish/subscribe and object oriented technology for enterprise integration of heterogeneous applications
- ❑ Real-time communications and networking based upon open, public, and international standards such as:
 - ▶ Manufacturing Message Specification (MMS) per ISO9506
 - ▶ Inter-control Center Communications Protocol (ICCP) per IEC60870-6 TASE.2
 - ▶ Utility Communications Architecture (UCA™) per IEC61850
- ❑ Automation and control systems including post-process feedback gaging and automatic paging systems.

NOTES: 1.) Specifications presented herein are thought to be accurate at time of publication but are subject to change without notice. NO WARRANTIES OF ANY KIND ARE IMPLIED ON THE INFORMATION CONTAINED IN THIS DOCUMENT. 2.) All company names, tradenames and trademark are trademarks or registered trademarks of their respective companies. 3.) Some digital Imagery © copyright 2001 PhotoDisc, Inc.



Systems Integration Specialists Company, Inc.
6605 19½ Mile Rd, Sterling Hts, MI 48314-1408 USA
Tel: +586-254-0020 Fax: +586-254-0053
info@sisconet.com <http://www.sisconet.com>

Represented By:



AMA-SYSTEMS GMBH

Stuttgarter Str. 13, 75179 Pforzheim, Germany
Tel. +49-7231-78 61 13, Fax. +49-7231-78 95 78
contact@ama-systems.com, www.ama-systems.com